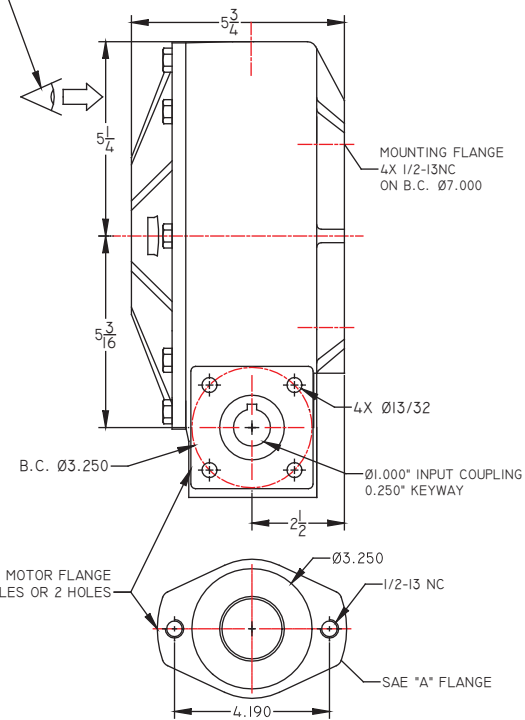
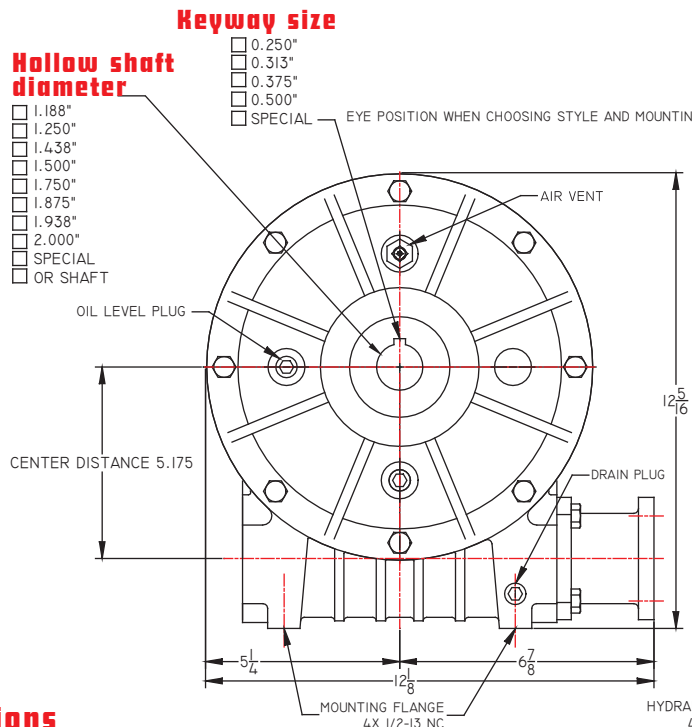


**Company name:** \_\_\_\_\_

**Buyer's name:** \_\_\_\_\_ **Phone number:** \_\_\_\_\_

**Qty needed:** \_\_\_\_\_ **Delivery:** \_\_\_\_\_



**Options**

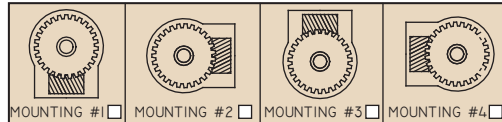
- 25:1 RATIO
- RIGHT HAND THREAD
- 4 BOLT ADAPTOR
- NOT PAINTED
- NO OIL
- SPEED SENSOR ON THE INPUT SHAFT
- HEAVY DUTY MODEL MW-331
- 50:1 RATIO
- LEFT HAND THREAD
- 2 BOLT ADAPTOR
- PRIMER PAINTED
- FILLED WITH 80W90 OIL

**CIRCLE A LETTER TO CHOOSE A STYLE**

|  |   |   |   |   |
|--|---|---|---|---|
|  | A | B | C | D |
|  | E | F | G | H |
|  | I | J | K | L |
|  | M | N | O | P |

Ø1.000", 1.00" LONG

MOUNTING POSITION FOR OIL LEVEL PLUG, AIR VENT AND DRAIN PLUG



| <input type="checkbox"/> RATIO 25:1 | INPUT RPM |       |      |      |
|-------------------------------------|-----------|-------|------|------|
| INPUT HP                            | 100       | 400   | 1200 | 1750 |
| INPUT TORQUE                        | 1.3       | 3.9   | 6.9  | 7.9  |
| OUTPUT HP                           | 0.9       | 3.0   | 5.7  | 6.8  |
| OUTPUT TORQUE                       | 14175     | 11911 | 7514 | 6120 |

| <input type="checkbox"/> RATIO 50:1 | INPUT RPM |       |      |      |
|-------------------------------------|-----------|-------|------|------|
| INPUT HP                            | 100       | 400   | 1200 | 1750 |
| INPUT TORQUE                        | 0.8       | 2.3   | 3.8  | 4.3  |
| OUTPUT HP                           | 0.4       | 1.5   | 2.7  | 3.3  |
| OUTPUT TORQUE                       | 13388     | 11419 | 7186 | 5850 |

- FOR STYLE "E" TO "P", PLEASE SEND A DRAWING WITH ALL SHAFT DIMENSIONS AND DETAILS.

DRAWING ABOVE SHOWS A-I (STYLE-MOUNTING)

GEARBOX WEIGHT: 78 POUNDS

MOUNTING FLANGE SIDE